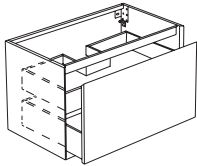


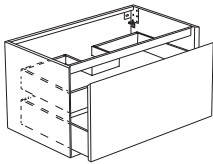
45° wall-mount vanities

Installation Guide

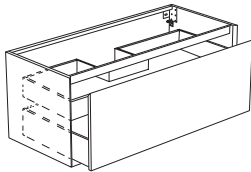
FULL



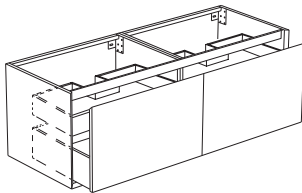
series 700
F45V1-0700



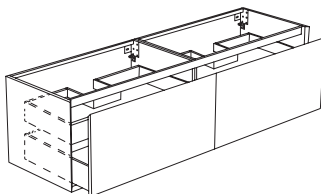
series 900
F45V1-0900



series 1200
F45V1-1200

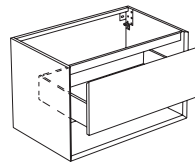


series 1400
F45V1-1400

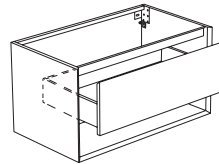


series 1800
F45V1-1800

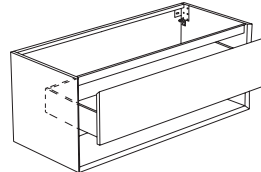
UP



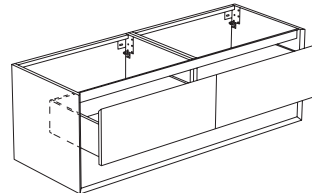
series 700
F45V2-0700



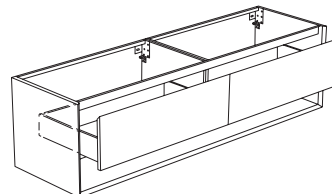
series 900
F45V2-0900



series 1200
F45V2-1200



series 1400
F45V2-1400



series 1800
F45V2-1800

Attention — Before Installation

Thank you for choosing from among Blu's quality line of products. We recommend that you carefully read this installation guide to ensure your vanity's proper operation and reliability for many years to come.

NOTE: Product is already optimized/preset for best drawer fitting - only minor adjustments may be needed. Adhere to all local building and plumbing codes. The diagrams in this guide are not construction plans. They are visual aids.

Installation Requirements

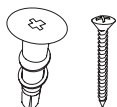
Please read the instructions carefully so as to avoid any damage to the fixture.

1. To ensure this product is installed properly, you must read and follow these guidelines.
2. The owner/user of the product must keep this information for future reference.
3. Consult local building codes to make sure the installation complies with standards.
4. Remove the unit from its packaging. Before disposing of it, inspect the unit to make sure its in good shape. Should inspection reveal any damage or defect in the finish, contact your distributor. The warranty does not cover damages or defects in the finish once it has been installed. Blu Bathworks' responsibility for shipping damages ceases upon delivery of the product in good order to the carrier. All complaints regarding damage due to transport must be made directly to the carrier.
5. Place the unit in the bathroom before you start working. Conserve all nuts and bolts.
6. To protect the unit during installation, we recommend that you lay a piece of cardboard on the bottom.
7. If the unit is covered with polyethylene protective film, do not remove until installation is complete to grant maximum protection. However, remove film where any two surfaces will be in permanent contact.
8. Verify that all dimensions on the plan are the same as the ones of the unit.

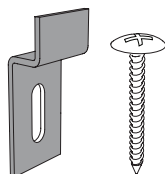
Installation Notes

Important! Install this product according to the installation guide.

Supplied:



dowel for plaster x2 (700, 900, 1200)
dowel for plaster x4 (1400, 1800)



hanger & screw x2 (700, 900, 1200)
hanger & screw x4 (1400, 1800)



screw x2 (700, 900, 1200)
screw x4 (1400, 1800)

Technical Support Assistance

If further assistance is required, please contact:

Product Support at 1.866.907.0122 (09:00 – 17:00hrs PST) or email technical@blubathworks.com

North America

Blu Bathworks Inc.

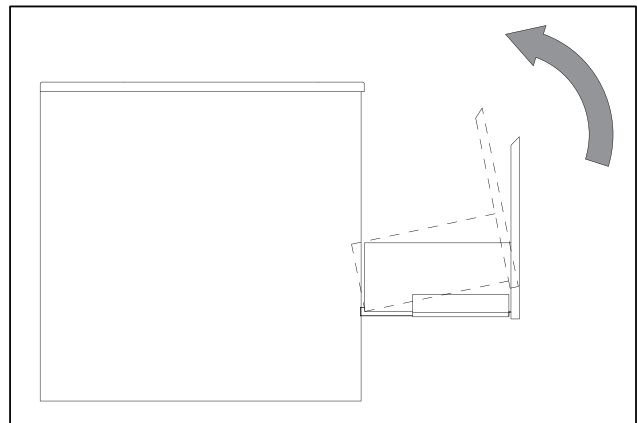
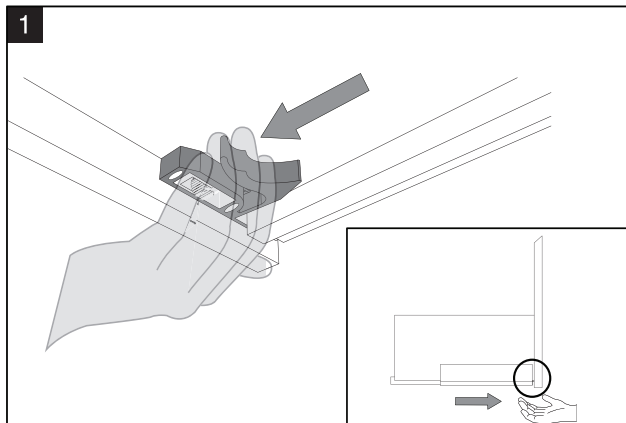
188 Smith Street, Vancouver, BC, Canada, V6B 6A9

T +1.604.299.0122 F +1.604.299.0125

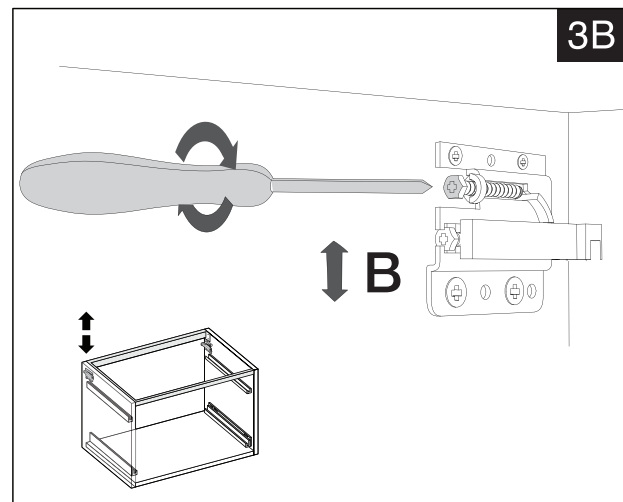
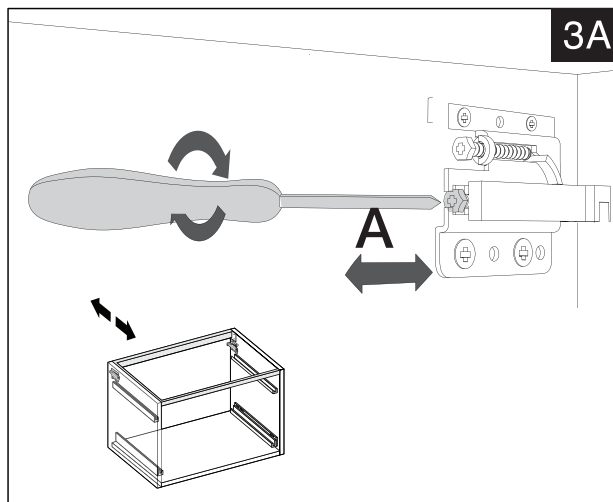
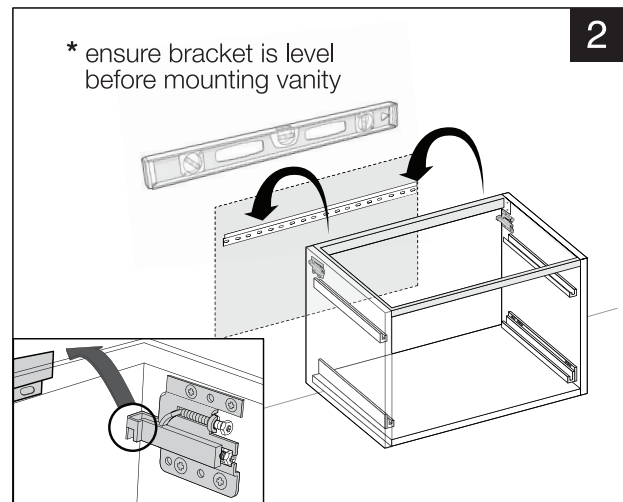
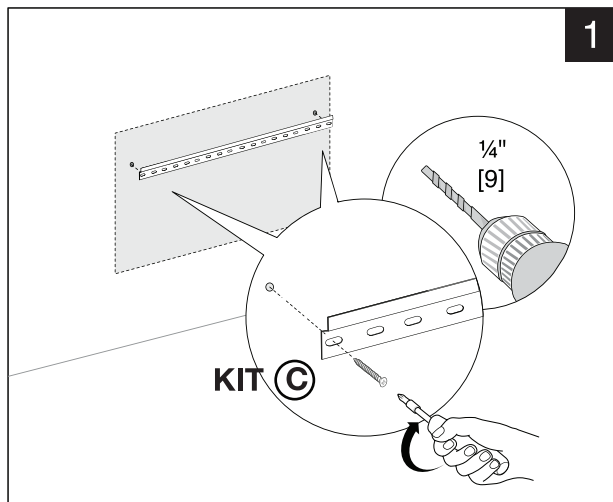
Please refer to blubathworks.com for warranty, terms & conditions under warranty & procedure for warranty service.

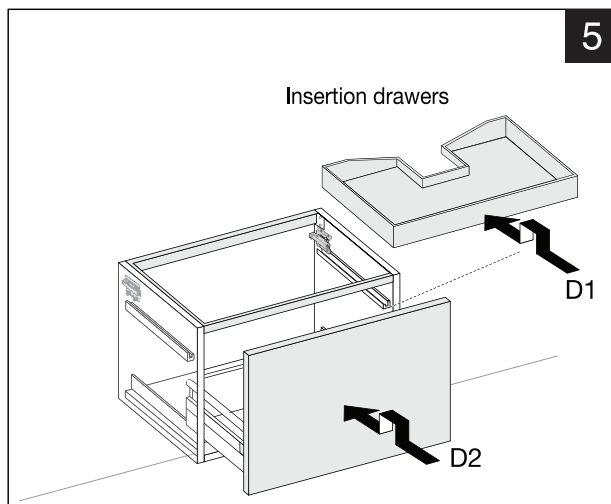
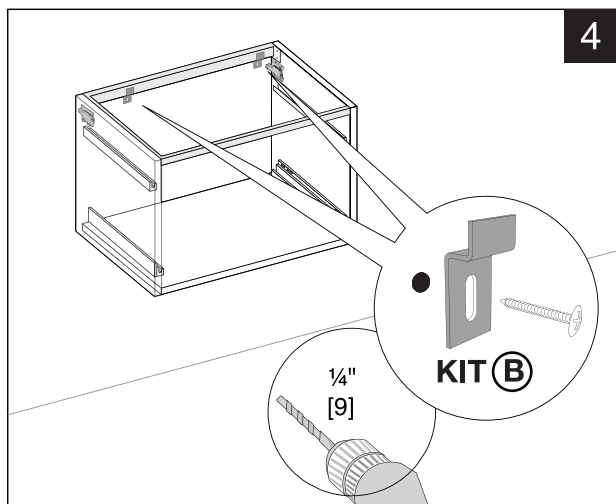
Before Installation - unlock drawer(s):

Press the flap placed under the drawer, while lifting



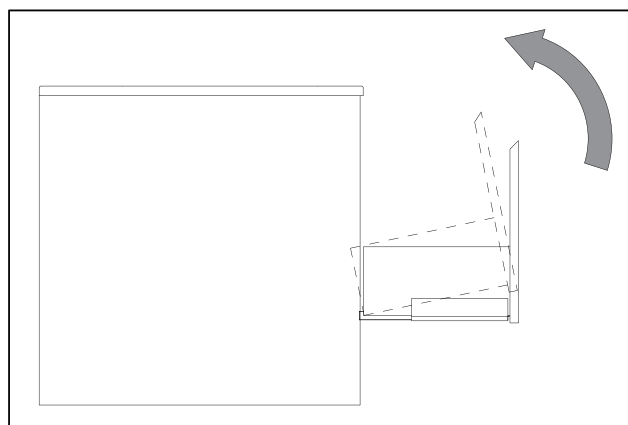
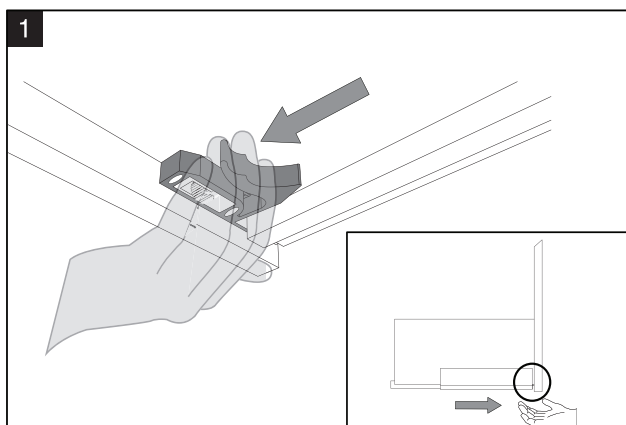
Installation:





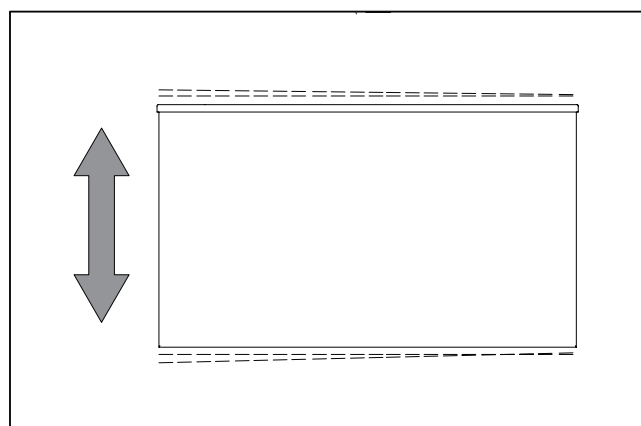
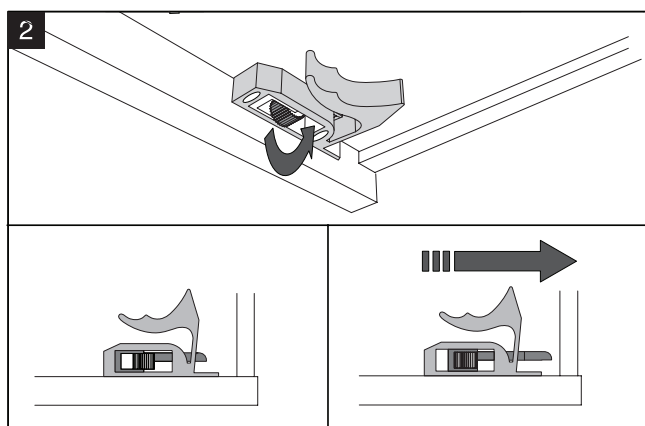
How to Undock the Drawer:

Press the flap placed under the drawer, while lifting



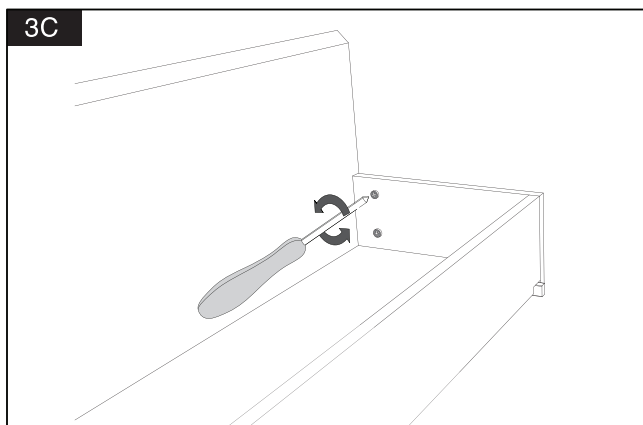
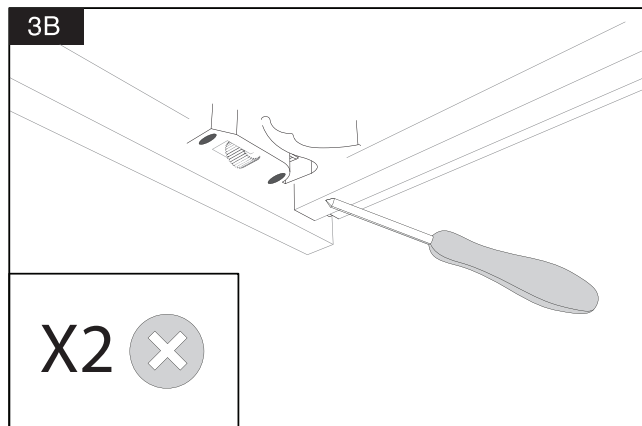
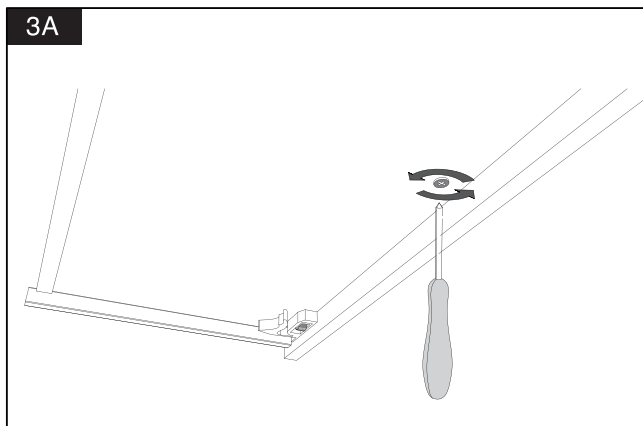
Setting the Height of the Drawer:

To set the drawer height rotate the ring nuts placed inside the release system of the drawer



How to Unlock the Front:

To release the front first loosen the eccentric screw on the bottom side of the drawer (3A), then remove the screws that secure the release system to the front (3B) and finally unlock the eccentric screws placed in the side panels of the drawers (3C)



Care and Maintenance

Wood finish

Clean with a soft cloth or humid non-abrasive sponge using neutral and non-abrasive detergents. Rinse the surface carefully after cleaning. Do not use aggressive chemical solvents, such as acetone and trichloroethylene. In case of persistent stains, use a soft cloth and neutral soap. We recommend testing any product on the internal side of the surface, e.g. in a corner, before using it on the outer surface. Accurately dry the surfaces after use.

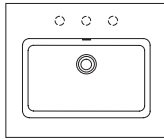
Lacquered finish

Clean with a soft cloth or humid non-abrasive sponge using neutral and non-abrasive detergents. Rinse the surface carefully after cleaning. Do not use aggressive chemical solvents, such as acetone and trichloroethylene. In case of persistent stains, use a soft cloth with neutral soap or products suitable for cleaning windows only on glossy lacquered surfaces. Do not use ammonia. We recommend testing any product on the internal side of the surface, e.g. in a corner, before using it on the outer surface. Accurately dry the surfaces after use.

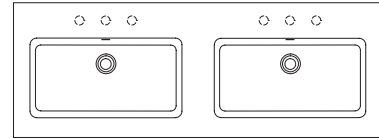
blu·stone™ integrated basins

Installation Guide

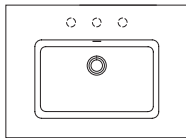
SA0600



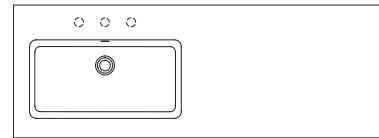
SA1400
SA1410



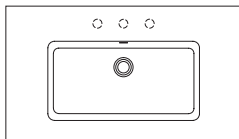
SA0700



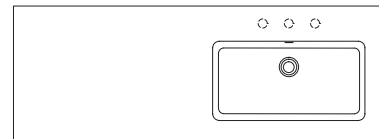
SA1401
SA1411



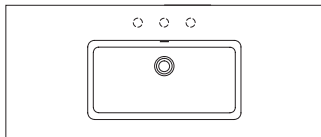
SA0900
SA0910



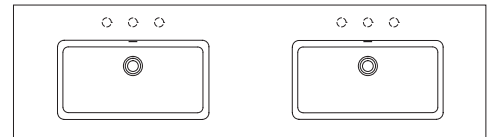
SA1402
SA1412



SA1200
SA1210



SA1800
SA1810



Attention — Before Installation

- We recommend that the installation be done by a minimum of 2 people as a security precaution. Also make sure to adopt the proper posture when lifting the basin.
- Adhere to all local building and plumbing codes. The diagrams in this guide are not construction plans. They are visual aids.
- For best results, the floor must be level and the wall must be square with the floor.

Installation Requirements

Please read the instructions carefully so as to avoid any damage to the fixture.

1. To ensure this product is installed properly, you must read and follow these guidelines.
2. The owner/user of the product must keep this information for future reference.
3. Consult local building codes to make sure the installation complies with standards.
4. Remove the unit from its packaging. Before disposing of it, inspect the unit to make sure its in good shape. Should inspection reveal any damage or defect in the finish, contact your distributor. The warranty does not cover damages or defects in the finish once it has been installed. Blu Bathworks' responsibility for shipping damages ceases upon delivery of the product in good order to the carrier. All complaints regarding damage due to transport must be made directly to the carrier.
5. Place the unit in the bathroom before you start working. Conserve all nuts and bolts.
6. To protect the unit during installation, we recommend that you lay a piece of cardboard on the bottom.
7. If the unit is covered with polyethylene protective film, do not remove until installation is complete to grant maximum protection. However, remove film where any two surfaces will be in permanent contact.
8. Verify that all dimensions on the plan are the same as the ones of the unit.

Installation Notes

Important! Install this product according to the installation guide. Product does have an overflow. Our products must be installed by certified professionals only and according to our installation guide as well as federal, provincial / state and local building codes and regulations.

Technical Support Assistance

If further assistance is required, please contact:

Product Support at 1.866.907.0122 (09:00 – 17:00hrs PST) or email technical@blubathworks.com

North America

Blu Bathworks Inc.

188 Smithe Street, Vancouver, BC, Canada, V6B 6A9

T +1.604.299.0122 F +1.604.299.0125

Please refer to blubathworks.com for warranty, terms & conditions under warranty & procedure for warranty service.

Installation Notes

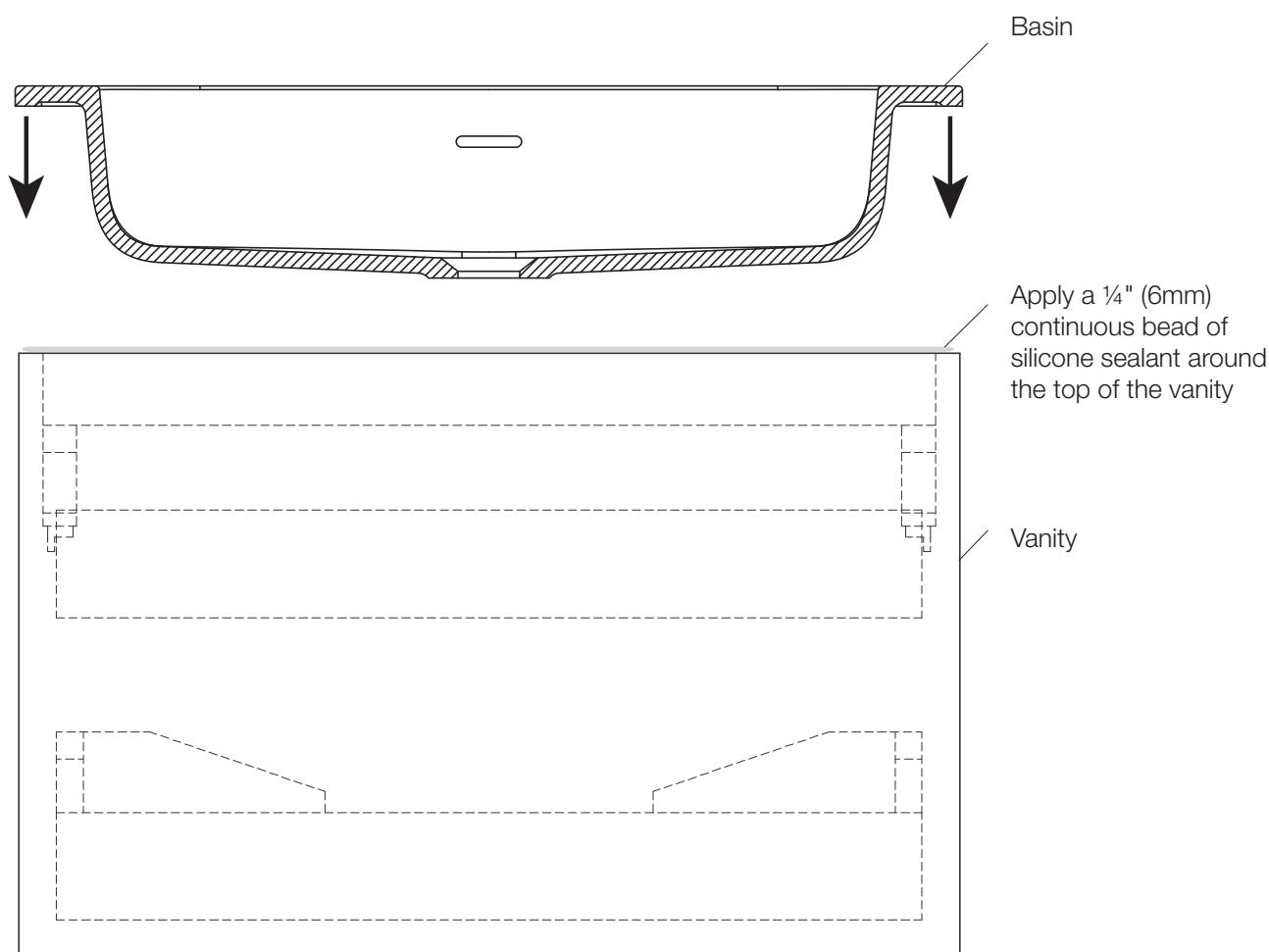
Important! Install this product according to the installation guide. Product does have an overflow. Deck mounted faucet spouts must provide a minimum of 6" reach for adequate clearance into basin, or a minimum 9" reach for wall mounted faucet spouts. Our products must be installed by certified professionals only and according to our installation guide as well as federal, provincial / state and local building codes and regulations.

Installation for Integrated Basins

BASIN INSTALLATION

*Note: For deck mounted tapware refer to drilling instructions prior to the installation of the basin.

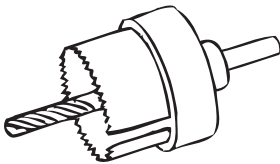
1. Apply a ¼" (6mm) continuous bead of silicone sealant around the top of the vanity, as illustrated.
2. Position the basin on top of the vanity.
3. Verify that the basin is level. If the basin is not level, gently press down on the basin.
4. Wipe away excess silicone sealant.
5. Allow the silicone sealant to set according to the sealant manufacturer's instructions.
6. Complete the water supply and drain connections.
7. Run water into the basin and check for leaks.



Faucet and Drain Connections (Not Supplied)

- Connect the water supply to the faucet according to faucet instructions.
- Connect and tighten the trap to the drain.
- Turn ON the water supplies to the faucet.
- Purge air from the HOT & COLD water by running the water for a few seconds.
- Fill the lavatory with water.
- Check for leaks at the water supply and drain connections.

Drilling Instructions for Deck Mount Faucets



- Use a WIDIA (Cemented Carbide) cutter with the appropriate diameter according to the faucet manufacturer's installation guide.
- Start drilling from the underside of the basin.
- Applying light pressure, drill and stop when the center drill has completely penetrated the basin.
- Remove the cutter and flip the basin over.
- Place the cutter into the guide hole.
- Applying light pressure, finish drilling the required hole.

blu·stone™ cleaning & repair guide

blu·stone™ is Blu Bathworks' signature eco-friendly stone collection; a durable, low maintenance and hygienic material that is high pressure injection molded, non-porous and anti-microbial. blu·stone™ products are stain, scratch and impact resistant, and easy to clean: after each use, simply wipe with a soft cloth to remove any surface dirt.

routine care

- Never expose blu·stone™ to petroleum based products, such as paint removers, oven cleaners or other solvents
(Note: personal hygiene products and cosmetics will NOT damage the surface)
- We recommend that stains are removed within 24 hours
- Do not directly cut on the blu·stone™ surface
- Blu Bathworks does not recommend exceeding US/ Canada maximum hot water temperature regulations of 150°F/65°C, respectively. Exceeding stated temperatures could result in damage to blu·stone™ products

standard cleaning

For standard cleaning of both gloss and matte finishes, we recommend using widely available cleaning products such as Mr. Clean, Fantastik, VIM, CIF etc. Matte finished products may occasionally require a mildly abrasive product.

blu·stone™ matte finish:

- For more difficult stains, use a mildly abrasive cream cleanser such as Soft Scrub, Comet Soft Cleanser, CIF or VIM

blu·stone™ gloss finish:

- Do not use abrasive products or cream cleansers

scratched or damaged surfaces

blu·stone™ matte finish:

- Ensure there is no surface dirt by flushing with water
- Rub the 600-grit sanding block, provided, in a gentle circular motion
- Higher grit sandpaper may be required to blend the repaired area to match the existing product finish

blu·stone™ gloss finish:

- Ensure there is no surface dirt by flushing with water
- We recommend sanding the area starting with 600, 800 and 1200-grit sandpaper: begin with the lower number (coarser) grit followed with each higher number (finer) in ascending order
- Finish by polishing the surface using a cloth and white polishing compound for automobiles

repairs

For more extensive repairs, send a photograph of your blu·stone™ product to Blu Customer Service (technical@blubathworks.com), who will inform you as to the most appropriate methods to use.

limited warranty

Blu Bathworks' ("Blu") warranty on blu·stone™ products covers all defects in materials and manufacturing for a period of five (5) years from the date of purchase. This limited warranty, starting on the original purchase date, is only offered to the original purchaser who acquires the product directly from Blu or from its authorized dealers. This limited warranty does not apply to cases in which a product was incorrectly installed, nor to damage due to negligence, misuse, thermal shocks, cigarettes, flames, natural catastrophes or other accidents. Blu is not responsible for costs and claims that may arise from purchase of a product unsuited to the structure of the existing building. Any transformation or alteration made to a Blu product automatically voids the warranty. Blu's warranty is limited to repair or replacement (with a product of equal value), provided the claim is made to an authorized dealer or directly to Blu, within the warranty period. Labor costs and any other expenses entailed by replacement of a Blu product are not covered by the warranty.